



ORIGINAL ARTICLE

# Impact of metformin versus dietary interventions on placental morphology in women with gestational diabetes mellitus.

Amber Salman<sup>1</sup>, Momna Riaz<sup>2</sup>, Shireen Hamid<sup>3</sup>, Sadia Alam<sup>4</sup>, Faiza Hanif<sup>5</sup>, Sana Fatima<sup>6</sup>

**Article Citation:** Salman A, Riaz M, Hamid S, Alam S, Hanif F, Fatima S. Impact of metformin versus dietary interventions on placental morphology in women with gestational diabetes mellitus. Professional Med J 2025; 32(05):577-582. <https://doi.org/10.29309/TPMJ/2025.32.05.8829>

**ABSTRACT... Objective:** To evaluate the effects of dietary control and Metformin on placental morphology in women with Gestational Diabetes Mellitus (GDM). **Study Design:** Clinical study. **Setting:** Services Hospital Lahore and Shaikh Zayed Hospital Lahore. **Period:** June 2023 till June 24. **Methods:** A total of 56 women with GDM were enrolled after providing informed consent. Of these, 28 women with blood sugar levels of 140 mg/dl or less were assigned to Group B (2500-3000 kcal/day diet and 30-minute walks three times a week) and were placed on dietary control, while the remaining 28 women with blood sugar levels greater than 140 mg/dl were assigned to Group C, where they were managed with a diet and Metformin (500 mg TDS). A control group (Group A) consisted of 25 healthy pregnant women. Placental and cord tissue samples were collected and analyzed for morphology after delivery. **Results:** Group B exhibited placental changes with more extensive villous immaturity, charangoids, and syncytial knots. In contrast, Group C showed changes such as infarction, necrosis and calcification. Significant differences in placental and cord widths were observed in Group B compared to Group A, while only cord width differed significantly in Group C compared to Group A in gross morphology. Microscopic examination revealed the presence of charangoids, infarction, and syncytial loops in Group B, along with increased villous immaturity. Charangoids and syncytial knots were observed in Group B compared to Group C, with minimal differences noted between Group C and Group A in placental width. **Conclusion:** Metformin demonstrated more favorable effects on placental morphology compared to dietary control, with results comparable to those observed in normal pregnancies.

**Key words:** Gestational Diabetes Mellitus, Metformin, Placental Morphology.

## INTRODUCTION

Gestational diabetes mellitus (GDM) is a disorder characterized by glucose intolerance identified usually during the second pregnancy, primarily caused by the effects of placental hormones and insulin resistance.<sup>1,2</sup> GDM offers significant risks for both mother and fetus. Complications during pregnancy and delivery, the prevalence of GDM is higher, whereas in Asian community, it is around 11.7%.<sup>5</sup> Poor outcomes are further exacerbated by limited healthcare access and inadequate awareness, emphasizing the need for timely diagnosis and effective management.<sup>6</sup>

The placenta is a vital organ in pregnancy, necessary for provision of nutrient and oxygen

to fetus.<sup>7</sup> Structurally, it is a discoid-shaped organ housing villi containing blood vessels and mesenchymal tissues.<sup>8</sup> Maternal metabolic environment has profoundly influenced its development and function. In diabetes, including GDM, placental morphology undergoes significant gross and microscopic changes, such as increased stromal density, trophoblastic proliferation and enhanced villous capillary formation, driven primarily by elevated fetal insulin levels.<sup>9</sup>

Hypoxia is a crucial factor contributing to these alterations.<sup>10</sup> As fetal demands increase, oxygen delivery to the placenta becomes inadequate, leading to structural adaptations such as increased placental size, thickness, and glucose deposition. Microscopic examination of GDM

1. Ph.D (Anatomy), Associate Professor Anatomy, University Medical & Dental College, Faisalabad.  
2. M.Phil (Anatomy), Assistant Professor Anatomy, University Medical & Dental College, Faisalabad.  
3. FCPS (Histopathology), Assistant Professor Pathology, Aziz Fatima Medical and Dental College, Faisalabad.  
4. M.Phil, FCPS (Histopathology), Assistant Professor Pathology, Akhter Saeed Medical and Dental College, Lahore.  
5. MBBS, M.Phil, Senior Demonstrator Anatomy, King Edward Medical University, Lahore.  
6. MBBS, Senior Demonstrator Anatomy, University Medical & Dental College, Faisalabad.

**Correspondence Address:**  
Dr. Amber Salman  
Department of Anatomy  
University Medical & Dental College,  
Faisalabad.  
[dr.ambersalman2@gmail.com](mailto:dr.ambersalman2@gmail.com)

**Article received on:** 19/12/2024  
**Accepted for publication:** 26/02/2025

placentas reveals increase in hypoxic markers and vascular changes, which are associated with adverse outcomes like preterm delivery, macrosomia and stillbirth.<sup>11,12</sup>

The management of GDM involves not only lifestyle modifications but pharmacological interventions too to control the blood glucose level.<sup>13</sup> Insulin has long been the standard therapy that can effectively lower the blood glucose levels. However, it is associated with complications such as maternal weight gain, placental hypoxic alterations, which exacerbate pregnancy risks.<sup>14</sup>

In contrast to the past, when oral anti-diabetic drugs were generally considered teratogenic, Metformin, a category B drug, has recently gained acceptance as a safe and effective alternative. It improves insulin sensitivity, reduces hepatic glucose production, and enhances glucose uptake, thereby achieving euglycemia.<sup>15</sup> Additionally, it improves the endothelial function and reduces the frequency of diabetes related micro and macrovascular complications.

The placental morphology is significantly affected by the diabetes, with hyperglycemia causing profound structural and functional changes. Therefore, this study was designed to study the role of Metformin counteracting the effect of diabetes and offering a protective influence on placental morphology and its potential as a therapeutic agent in managing GDM, in terms of maternal and fetal health.

## METHODS

This clinical study was conducted from June 2023 till June 24 at Services Hospital Lahore and Shaikh Zayed Hospital Lahore after ethical approval (Letter No. F-38/NHRC/AQMIN/FRB/205). Fasting blood sugar (FBS) and random blood sugar (RBS) levels of pregnant women enrolled in this clinical trial were monitored during their prenatal visits. Gestational Diabetes Mellitus (GDM) was initially diagnosed using a glucometer and later on confirmed through laboratory testing, with FBS > 110 mg/dl and RBS > 130 mg/dl serving as diagnostic criteria. In high risk patients, like those with prior history of GDM or poor obstetric

history, a 55 gm oral glucose challenge test (value RBS 150mg/dl) was used to make the diagnosis, which was later verified by oral glucose tolerance test (OGTT).

Nonprobability sampling method was used to include the participant. A total of 25 pregnant females with no concomitant disorders were selected for control (Group A). Furthermore, 56 GDM females were registered for the research after their fully informed and signed consent. These GDM females were equally divided into two groups, with 28 participants in each: Group B (managed through diet control) and Group C (administered Metformin) in doses ranging from 500 to 1600 mg). All females of group A and B were advised to follow the provided diet chart for 2800 calories intake per day and 30 minutes of walking per week for almost 30 minutes. The participants of Group C were administered Metformin tablets in parallel with standard management comprising of 2800 calorie intake per day besides 30 minutes of walking three times in a week. Initially 500 mg of Metformin was administered orally and gradually increasing on the glycemic as well as tolerance test. As per the wishes of patient, the dose of drug was gradually increased up to 1600 mg. Invariably, these participants were kept under surveillance at the prenatal hospitals until their term. On every visit, all the participants were examined for their general health (weight gain, temperature, blood pressure and RBS). The pregnant females of Group B & C were especially looked for their blood sugar level and any adverse effects like weight gain, body swelling and infections. Additionally, the Metformin dose of Group C was carefully monitored, all necessary and desirable management was reiterated. 2 participants of group B and 3 from group C were excluded from this clinical trial as these individuals either received insulin as part of their treatment or gave birth somewhere else. Placentas of these females were collected within an hour after birth and were kept in 10% formalin in labeled containers.

Placentas were grossly observed for morphological features (Table-I, II A, II B). To prepare slides for histopathology, samples of

the tissue were taken from center, at 7 o'clock position and at 12 o'clock. Then these samples were treated well with alcohol along with xylene and get embedded in paraffin wax. By using a manual microtome, 4µm thin sections of the embedded tissue were cut. The slides stained with hematoxylin and eosin stain were observed under a light microscope to look for hypoxic changes (Table-III).

For analysis of data SPSS version 22 was used. The results were considered statistically significant with the P value of less than 0.05. The Dependent t test was used to evaluate mean of quantitative variables, however chi square tests was applied to categorical variables for evaluating percentages. The Fisher exact test was applied where cell counts was low in lieu of chi square test.

**RESULTS**

Groups A showed significant differences in umbilical cord width with Group B (p=0.001) and Groups C (p=0.01) whereas this difference was insignificant between Group B and C. Similarly statistically significant difference was observed in

placental width of Groups B with A and C (p=0.001) whereas this difference was insignificant between Group A and C. All the other parameters differed insignificantly among the three Groups A, B and C (normal control, diet-controlled GDM, and metformin-treated GDM (Table-I, II A & B).

Histologically, villous immaturity, chorangiosis, infarction, and syncytial knots, were observed significantly different among Groups A and B, p= 0.05, 0.04, 0.04, and 0.003, respectively (Table-III). This difference remained statistically insignificant between Groups A and C (Table-III). Statically notable differences were noted in chorangiosis (p= 0.01), syncytial knot (p= 0.04) when Group A was compared with C but remained insignificant when all other groups.

Among GDM groups significant differences in FBG, HbA1c, and HbA1c levels were observed (p= 0.001, 0.001, and 0.001, respectively). In Group C (metformin-treated), significantly low levels of HbA1c were observed at 24 weeks of pregnancy while these levels were significantly high in Group B (diet-controlled GDM) in comparison to the control group (Table-

Sr #	Groups	Characteristics						
		Placental size1 (cm)	Placental size2 (cm)	Placental width (cm)	Placental weight (gm)	Cord length (cm)	Cord width (cm)	Cord vessels (n)
1	A	16.34±2.37	15.77±3.31	1.57	577.6±128.9	41.97±7.87	1.44±0.46	3±0
2	B	15.77±3.31	15.62±2.37	1.72±0.72	598±157.9	42.86±7.5	1.74±0.35	3±0
3	C	15.62±2.37	15.77±3.31	1.26±0.53	656.4±142.6	45.44±7.47	1.69±0.46	3±0
P value								
1	B v/s A			0.001*	0.53	0.61	0.001*	N/A
2	C v/s A			0.61	0.12	0.1	0.01*	N/A
3	B v/s C	0	0.13	0.001*	0.37	0.21	0.17	N/A

**Table-I. Comparison of parameters of Placentas within and between groups (N=75; n=25 per group)**

Sr #	Groups	Characteristics							
		Placental Consistency		Placental Shape		Color of Membrane		Cord Insertion	
		Soft	Hard	Discoid	Other	Blue	pale	central	Peripheral
1	A	18(72%)	7(28%)	19 (76%)	6 (24%)	9(36%)	16 (64%)	8 (32%)	17 (68%)
2	B	17(68%)	8(32%)	18 (72%)	7 (28%)	11 (44%)	14 (56%)	9 (36%)	16 (64%)
3	C	16 (64%)	9 (36%)	16(64%)	9(36%)	11 (44%)	14 (56%)	11 (44%)	14 (56%)
p Value									
4	B v/s A		0.76		>0.99		0.38		0.76
5	C v/s A		0.77		0.53		0.39		0.38
6	B v/s C		>0.99		0.52		>0.99		0.6

**Table-II (A). Comparison of gross parameters of placentas within and between groups (N=75; n=25 per group)**

Sr #	Groups	Characteristics					
		Cord Knots		Cord Stricture		Cord Hematoma	
		P	A	P	A	P	A
1	A	2 (8%)	23 (92%)	1 (4%)	24 (96%)	9 (36%)	16 (64%)
2	B	7 (28%)	18 (72%)	7 (28%)	18 (72%)	5 (20%)	20 (80%)
3	C	4 (16%)	21 (84%)	6 (24%)	19 (76%)	10 (40%)	15 (60%)
		<b>p Value</b>					
4	B v/s A	0.26		0.08		0.4	
5	C v/s A	>0.99		0.09		0.75	
6	B v/s C	0.48		>0.99		0.15	

Table-II (B). Comparison of gross parameters of Placentas within and between groups (N=75; n=25 per group)

Sr #	Groups	Characteristics										
		Villous Immaturity		Chorangiosis		Infarction		Villous fibrinoid necrosis		Calcification	Syncytial Knot	
		P	A	P	A	P	A	P	A	P	A	
1	A	5 (20%)	20 (80%)	7 (28%)	18 (72%)	8 (32%)	16 (64%)	19 (76%)	6 (24%)	4 (16%)	21 (84%)	
2	B	11 (44%)	14 (56%)	14 (56%)	11 (44%)	15 (60%)	10 (40%)	20 (80%)	13 (52%)	13 (52%)	14 (56%)	
3	C	6 (24%)	19 (76%)	5 (20%)	20 (80%)	9 (36%)	16 (64%)	3 (12%)	16 (64%)	9 (36%)	7 (28%)	
		<b>p Value</b>										
4	B v/s A	0.05*		0.04*		0.04*		0.7		0.74		
5	C v/s A	>0.9		0.73		0.52		0.16		0.26		
6	B v/s C	0.12		0.01*		0.02		0.25		0.15		

Table-III. Comparison of microscopic parameters of placenta within and between groups (N=75; n=25 per group)

Sr #	Groups	Maternal Parameters					
		Age (years)	Weight (kg)	Glucose (mg/dl)	RBS (mg/dl)	HbA1C 1 (%)	HbA1C 2 (%)
		Mean ± S.D	Mean ± S.D	Mean ± S.D	Mean ± S.D	%	%
1	A	29.1±4.47	69.8±10.1	73.24±9.35	128.8±36.8	4.74	4.98
2	B	30.07±3.7	70.1±10.2	90.9±16.7	149.72±37.9	5.43	5.84
3	C	29.86±4.1	78.1±10.6	105.4±13.12	172±38.44	5.29	5.44
		<b>p-value</b>					
1	B v/s A	0.058		<0.001*		0.02*	
2	C v/s A	0.11		<0.001*		0.00*	
3	B v/s C	0.76		<0.001*		0.04*	

Table-IV. Comparison of maternal parameters within and between groups (N=75; n=25 per group)

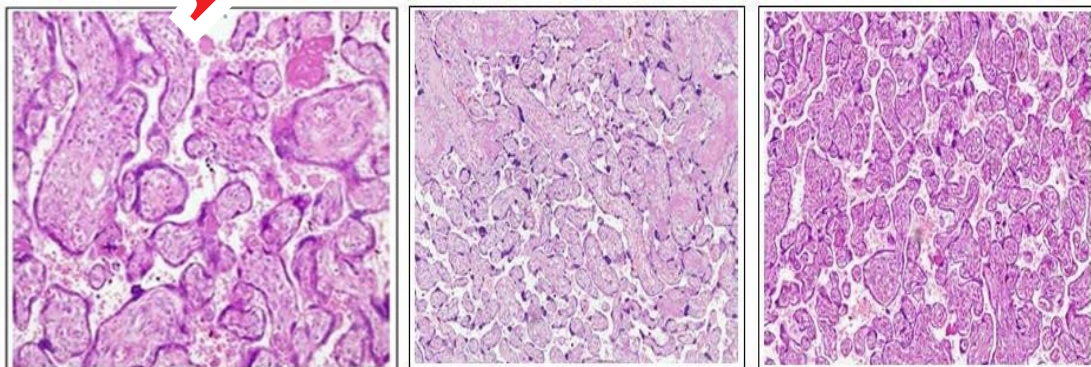


Figure-1. Histology of placenta; A; normal control B; Diet control, C; Metformin-treated



## DISCUSSION

Gestational diabetes mellitus (GDM) is linked with structural and functional alterations in the placenta, the key tissue facilitating communication between the mother and the developing fetus.<sup>3,9</sup> These changes in the placental morphology can be seen at both macroscopic and microscopic levels which can lead to fetal hypoxia, illness and even stillbirth. Hypoxia-induced placental changes in GDM include ischemia, villous immaturity and areas of villous fibrosis and necrosis. Other observed abnormalities include chorangiomas, the formation of syncytial knots and calcification.<sup>9</sup> Variations from normal placental morphology in GDM cases are marked by villous immaturity, infarction, chorangiomas, and an increase in syncytial knots. Our findings of edema, fibrosis, ischemic alterations, increased syncytial knots and fibrinoid necrosis observed in placentae from GDM cases managed with diet alone are consistent with the study conducted by Verma et al. (2010).<sup>16</sup> In contrast, placentae treated with metformin exhibited no significant differences in gross morphology compared to normal controls, except for cord width. Other gross and microscopic markers of hypoxia remained insignificantly different across groups, suggesting near to normal control conditions.

However, light microscopic analysis of metformin-treated placentae exhibited significantly reduced thickness, chorangiomas, syncytial knot formation compared to diet control cases. Additionally, the remaining histological indicators of hypoxia were significantly lower in the metformin group compared to the diet control group.<sup>17</sup> These findings are from a case report presented by Campbell (2009) who observed villous dysmaturity, chorangiomas, and villous fibrosis in GDM patient with preeclampsia treated with Metformin.<sup>18</sup> However, it remains unclear whether these placental changes were solely attributable to GDM or the combined effects of GDM and hypertension.<sup>18</sup> This could be due to the fact reported by numerous in-vivo and in-vitro studies that Metformin primarily reduces gluconeogenesis by inhibiting lactate uptake in adipocytes. Another key mechanism observed is a decrease in actin polymerization in hepatocytes,

leading to reduced glucose production from glycogen in liver cells. Additionally, Metformin interferes with the mitochondrial respiratory chain in hepatocytes, affecting cellular oxidation processes. Metformin significantly lowers HbA1c levels. As illustrated in Figure-1, Metformin-treated placentae may play a role in its beneficial effects for cases with GDM.<sup>19</sup> The multifaceted actions of Metformin on diabetic cells likely explain its positive impact on placental function compared to diet management alone.

## CONCLUSION

In conclusion, this study demonstrates that Metformin positively influenced placental morphology and markers of gestational Diabetes Mellitus (GDM), such as gluconeogenesis, lowers HbA1c levels, and improves placental structure by reducing hypoxia markers, offering favorable benefits over diet management alone. These findings support Metformin's potential as an effective treatment for GDM, though further research is needed to explore its long-term effects on maternal and fetal outcomes.

## CONFLICT OF INTEREST

The authors declare no conflict of interest.

## SOURCE OF FUNDING

This research received no specific grant from any funding agency in the public, commercial, or not-for-profit sectors.

Copyright© 26 Feb, 2025.

## REFERENCES

1. Ara I, Maqbool M, Gani I. **Role of insulin resistance in gestational diabetes mellitus: A literature review.** Chettinad Health City Medical Journal. (E-2278-2044 & P-2277-8845). 2022 Jun 30; 11(2):69-74.
2. Modzelewski R, Stefanowicz-Rutkowska MM, Matuszewski W, Bandurska-Stankiewicz EM. **Gestational diabetes mellitus—recent literature review.** Journal of Clinical Medicine. 2022 Sep 28; 11(19):5736.
3. Farahvar S, Walfisch A, Sheiner E. **Gestational diabetes risk factors and long-term consequences for both mother and offspring: A literature review.** Expert Review of Endocrinology & Metabolism. 2019 Jan 2; 14(1):63-74.

4. Wang H, Li N, Chivese T, Werfalli M, Sun H, Yuen L, et al. **IDF diabetes atlas: estimation of global and regional gestational diabetes mellitus prevalence for 2021 by International Association of Diabetes in Pregnancy Study Group's Criteria.** Diabetes Research and Clinical Practice. 2022 Jan 1; 183:109050.
5. Lee KW, Ching SM, Ramachandran V, Yee A, Hoo FK, Chia YC, et al. **Prevalence and risk factors of gestational diabetes mellitus in Asia: A systematic review and meta-analysis.** BMC pregnancy and childbirth. 2018 Dec; 18:1-20.
6. Makasheva A, Yermukhanova L, Kudabayeva K, Tazhbenova S, Nogayeva M, Tautanova A, et al. **Primary Care for Gestational Diabetes: A Bibliometric Analysis of Publications from 1991 to 2024.** International Journal of Environmental Research and Public Health. 2024 Oct 24; 21(11):1405.
7. Burton GJ, Jauniaux E. **The human placenta: new perspectives on its formation and function during early pregnancy.** Proceedings of the Royal Society B. 2023 Apr 26; 290(1997):20230191.
8. Acuña F, Portiansky EL, Miglino MA, Flamini MA, Barbeito CG. **Embryonic-placental relationship in Lagostomus maximus as compared to other hystricognath rodents and eutherian mammals.** Zoology. 2023 Jun 1; 158:126082.
9. Abdelhalim NY, Shehata MH, Gadallah HN, Sayed WM, Othman AA. **Morphological and ultrastructural changes in the placenta of the diabetic Egyptian women.** Acta Histochemica. 2012; 120(5):490-503.
10. Mahmoud EA, Al-Bakri NA, Qasir M. **Morphological changes of placenta in pregnant women complicated with preeclampsia.** Journal of Pharmaceutical Science. 2018 Nov 1; 10(11):2952-9.
11. El Sawy NA, Iqbal MS, Alkushi AG, EL Sawy N, Iqbal M, Alkushi A. **Histomorphological study of placenta in gestational diabetes mellitus.** Int. J. Morphol. 2018 Jun 1; 36(2):687-92.
12. Rasmussen L, Poulsen CW, Kampmann U, Smedegaard SB, Ovesen PG, Fuglsang J. **Diet and healthy lifestyle in the management of gestational diabetes mellitus.** Nutrients. 2020 Oct 6; 12(10):3050.
13. Oskovi-Kaplan ZA, Ozgu-Erdinc AS. **Management of gestational diabetes mellitus.** Diabetes: From Research to Clinical Practice: 2021; 4:257-72.
14. Akram S, Bibi S. **Review on pharmacological therapies for management of gestational diabetes.** International Journal of Pharmaceutical Sciences and Developmental Research. 2023 Sep.
15. Bao LX, Shi WT. **Insulin versus insulin for gestational diabetes mellitus: a systematic review and meta-analysis.** Journal of Maternal-Fetal & Neonatal Medicine. 2016; 27(16):2741-53.
16. V. ... .. J. M. **Cellular changes in the placenta of pregnancies complicated with diabetes.** Int J Morphol. 2010 Mar 1; 28(1):259-64.
17. ... .. Kanpurwala MA, Karim N, Hassan JA. **Effects of insulin and metformin on placental morphology in gestational diabetes mellitus.** Pakistan Journal of Medical Sciences. 2016 Nov; 32(6):1522.
18. Campbell IW, Duncan C, Urquhart R, Evans M. **Placental dysfunction and stillbirth in gestational diabetes mellitus.** The British Journal of Diabetes & Vascular Disease. 2009 Jan; 9(1):38-40.
19. Kirpichnikov D, McFarlane SI, Sowers JR. **Metformin: An update.** Annals of Internal Medicine. 2002 Jul 2; 137(1):25-33.

RETRACTED